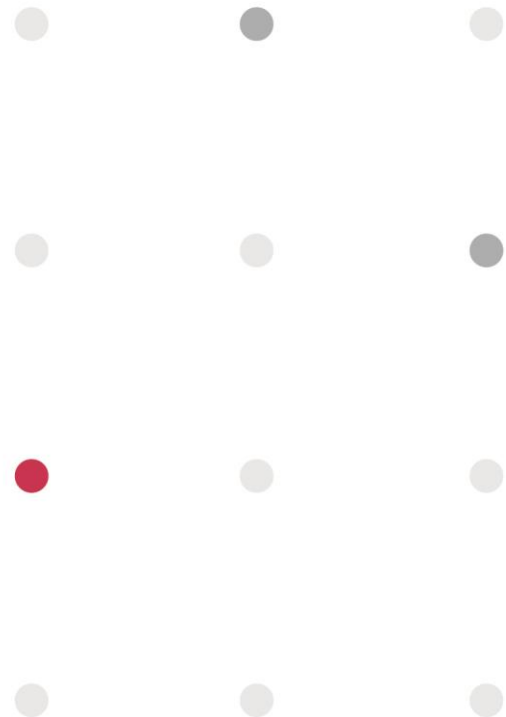




PASSIVE SYSTEM ALLIANCE

HannStar Board Corporation



HannStar Board Corporation (5469)

2023 Investor Conference

2023/05/30

Safe Harbor Statement

The statements in this release are forward-looking statements. Such forward-looking statements involve known and unknown risks, uncertainties and other factors which may cause the actual performance, financial condition or results of operations of Hannstar Board Corporation (the “Company”) to be materially different from what may be implied by such forward-looking statements.

The Company undertakes no obligation to update these forecasts and forward-looking statements for events or circumstances that occur subsequent to such date.

The statements in respect of historical matters may contain unaudited information, which may have certain deficiency or weakness so as not to fairly present financial condition or the result of operations of the Company.

Statement of Comprehensive Income

NT\$ Millions	1Q23	4Q22	QoQ		1Q23	1Q22	YoY	
Operating Revenue	10,330	11,127	(797)	-7.2%	10,330	12,210	(1,880)	-15.4%
Gross Profit	2,421	2,567	(147)	-5.7%	2,421	2,127	293	13.8%
Gross Profit Margin(%)	23.4%	23.1%	0.4%		23.4%	17.4%	6.0%	
Operating Profit	1,558	1,529	29	1.9%	1,558	1,172	386	32.9%
Operating Profit	15.1%	13.7%	1.3%		15.1%	9.6%	5.5%	
Net Profit Before Tax	1,376	1,531	(155)	-10.1%	1,376	1,476	(100)	-6.8%
Net Profit	947	731	216	29.5%	947	1,093	(145)	-13.3%
Net Profit Margin(%)	9.2%	6.6%	2.6%		9.2%	8.9%	0.2%	
Net Income to Shareholders of the Parent Company	603	460	143		603	680	(77)	
Contribution From HSB	359	275	84		359	400	(41)	
Contribution From GBM	245	209	35		245	276	(31)	
EPS (NT Dollar)	\$1.14	\$0.87	\$0.27		\$1.14	\$1.29	(\$0.15)	

Balance Sheet -Consolidated

NT\$ Millions	2023.03.31	%	2022.12.31	%	2022.03.31	%
Current Assets	44,765	59%	47,152	62%	45,918	59%
Non-Current Assets	30,950	41%	28,709	38%	31,531	41%
Total Assets	75,715	100%	75,861	100%	77,449	100%
Current Liabilities	25,008	33%	26,235	34%	27,949	36%
Non-Current Liabilities	9,053	12%	9,675	13%	8,507	11%
Total Liabilities	34,061	45%	35,910	47%	36,456	47%
Total Equity Attributable to Owners of the Company	28,917	38%	27,454	36%	28,940	37%
Non-Controlling Interests	12,738	17%	12,497	17%	12,053	16%
Total Equity	41,655	55%	39,951	53%	40,993	53%
Liabilities and Equity	75,715	100%	75,861	100%	77,449	100%
Net Asset Value Per share(NT Dollar)	54.72		51.95		54.76	
Current ratio (%)	179%		180%		164%	
Quick ratio (%)	148%		148%		128%	

PSA Sites



● Malaysia Plant II

HannStar

ELNA



● KunShan
(EMS)



● HuangJiang
(EMS)



● IPOH
(EMS)

gbm



● KuanYin
(PCB)



● JiangYin
(PCB)



● Shiga Elna
(PCB)



● Penang Elna
(PCB)



● Kunshan
(PCB)



● Chongqing
(PCB)

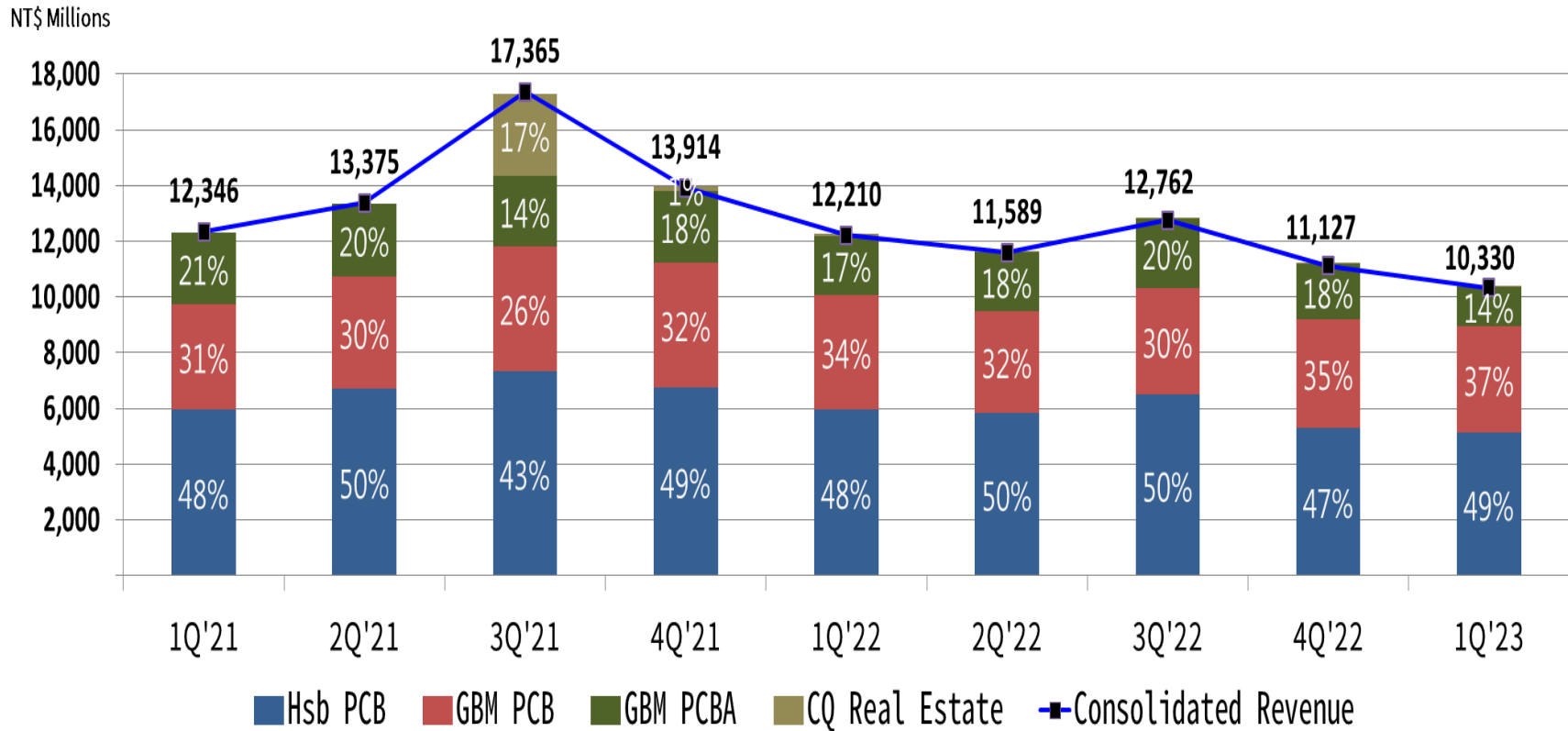


● Huangjiang
(PCB)

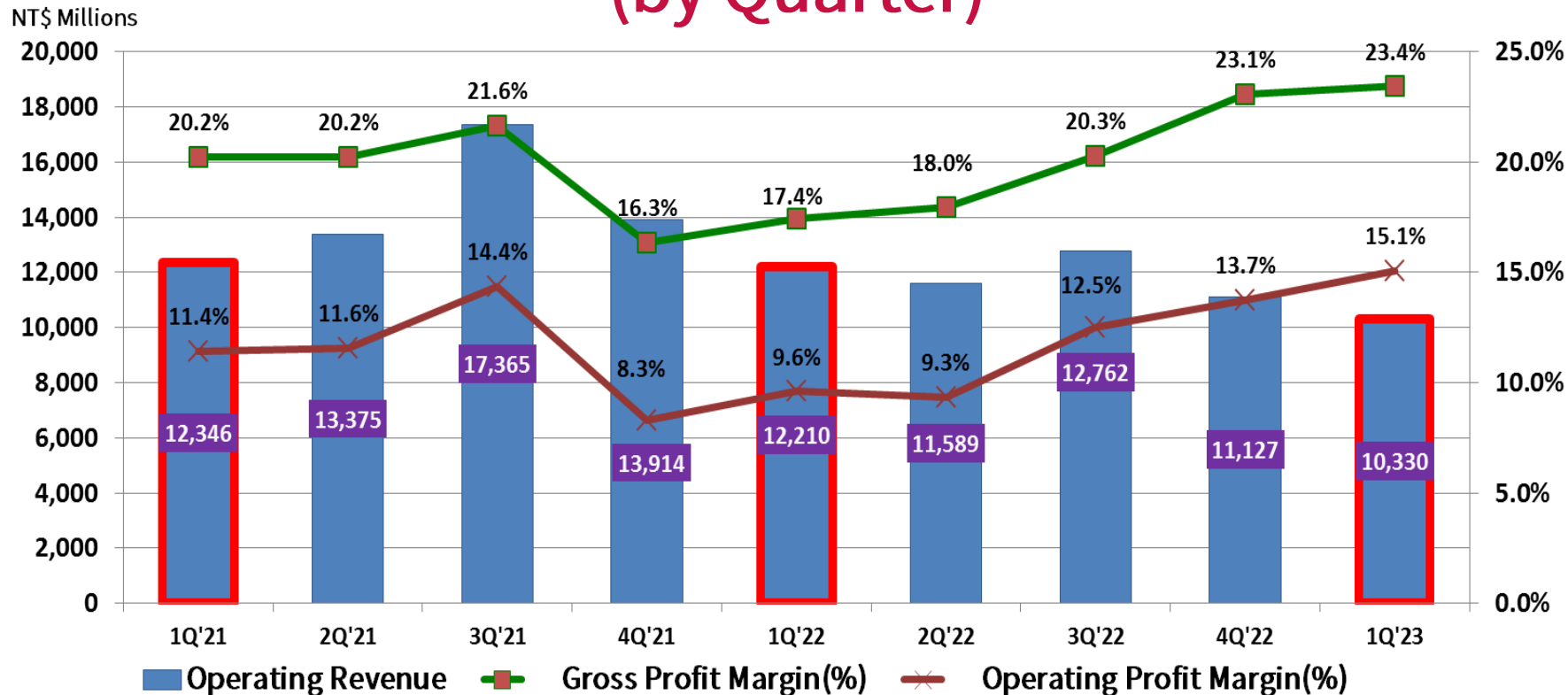


● ShenZhen
(PCB)

Consolidated Revenue Structure (HSB+GBM)

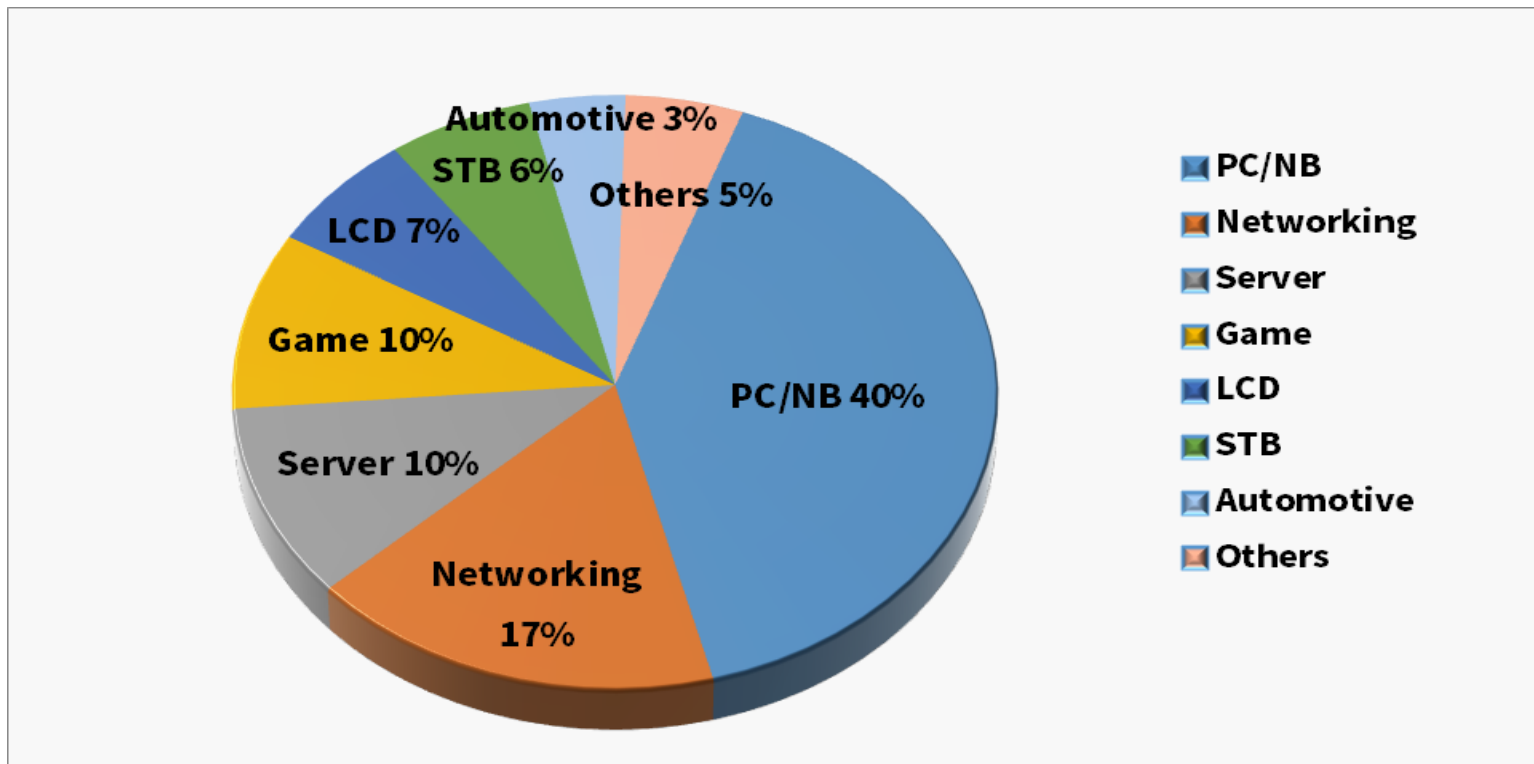


Trend of Revenue and Gross Margin-Consolidated (by Quarter)

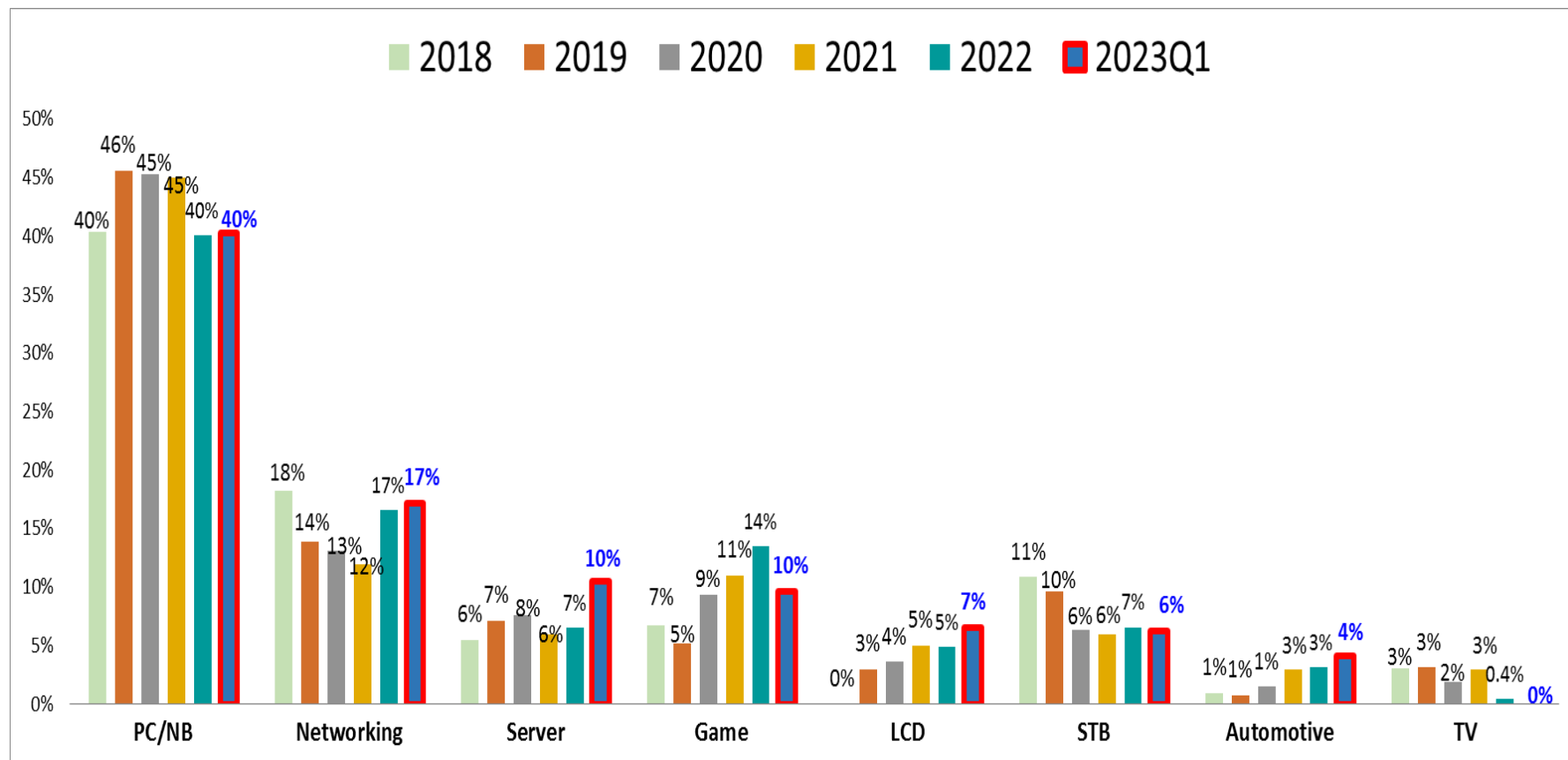


Product Mix – By Application(HSB only)

1Q 2023



Product Mix – By Application(HSB only)

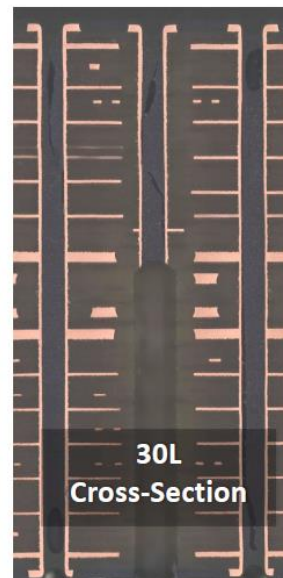
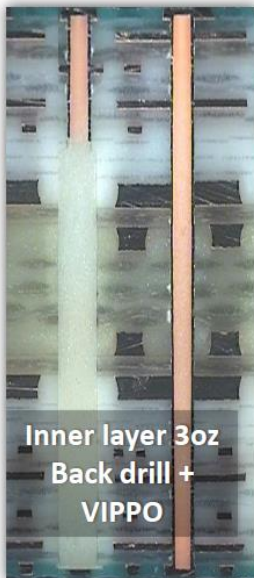


Business Overlook

Business Overview

- Advancing technology towards high layer counts and high-frequency products. Expanding capacity for Servers and Networking.

HSB Product- Advanced Process Technology



Business Overview

- Diversifying product portfolio by developing automotive, new energy vehicle, and AI products.

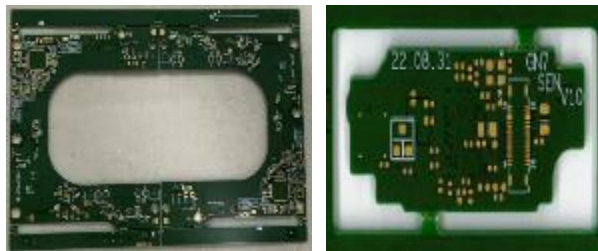
電池管理系統 BMS



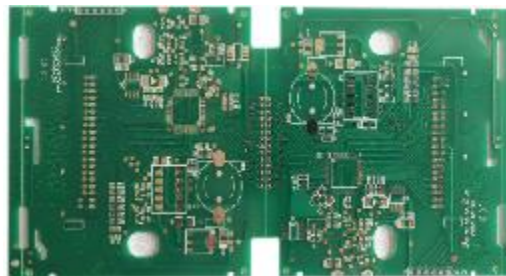
中控Center Control



雷達及攝像頭 Sensor & Camera

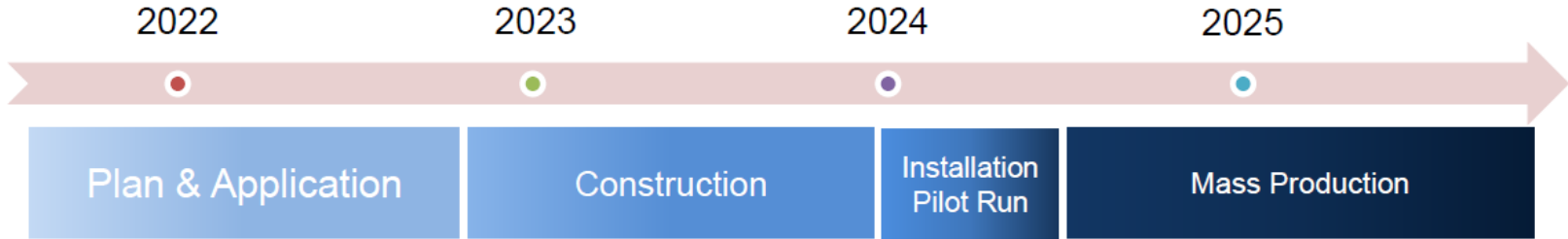


汽車導航及顯示屏
Navigation and Displays



Business Overview

- Mitigating customers' supply chain risks by expanding our production capacity in Southeast Asia.



Business Overview

- Implementing division of labor across global sites to drive the advantage of $1+1>2$ synergy.



Business Overview

- Advancing technology towards high layer counts and high-frequency products. Expanding capacity for Servers and Networking.
- Diversifying product portfolio by developing automotive, new energy vehicle, and AI products.
- Mitigating customers' supply chain risks by expanding our production capacity in Southeast Asia.
- Implementing division of labor across global sites to drive the advantage of 1+1>2 synergy.

Q & A

Thank you!

本資料均屬機密，僅供指定之收件人使用，未經寄件人許可不得揭露、複製或散佈本信件。

This message and any attachments are confidential and may be legally privileged. Any unauthorized review, use or distribution by anyone other than the intended recipient is strictly prohibited. If you are not the intended recipient, please immediately notify the sender, completely delete this documents, and destroy all copies. Your cooperation will be highly appreciated.